



Tech Sheet



Cyberoam iView

Cyberoam iView is an intelligent logging and reporting appliance that offers visibility into activity within the network by aggregating information from multiple devices that may be spread across multiple geographical locations, in near real-time. It offers multiple reports on iView's single dashboard, giving organizations an uninterrupted view of multiple network parameters like user, host, source, destination, protocol and more. Aggregated reporting gives them an organization-wide security picture, enabling them to apply or correct security policies from the central location.

The appliance-based approach provides simplicity in deployment and security that is difficult to achieve in a software solution. Its on-appliance storage offers data redundancy and faster data retrieval, supporting compliance requirements.

Organizations receive detailed drill-down reports through iView with a clear view of users and their activities over any device and location. Identity-based attack reports like top attacks, top applications used by attackers, top spam recipients, top viruses and more allow them to locate the weak link in the system, allowing quick problem identification and resolution while meeting the requirements of regulatory compliance. Host, application and firewall rule-based usage reports give identity-based information like top users consuming maximum bandwidth for uploads and downloads, top applications used, top accept and deny rules, allowing organizations to manage their resources and plan for their future needs in addition to enhance security levels.

Cyberoam iView supports proprietary devices as well as emerging network and security technologies, eliminating the need for separate logging and reporting solutions for different products within the system.

Features & Benefits

Centralized Log Management

Analyzing logs is complex and time-consuming as multiple devices lead to management of various systems and proprietary technologies that deliver logs in different formats. iView allows effortless, identity-based log management in near real-time. Organizations can match user identity-based information contained in logs with their rights to reveal discrepancies in user activities.

Security Management

Use of multiple network devices, applications and protocols in organizations has increased the complexity of threats exponentially. A quick glance at the iView dashboard, its drill-down reports and identity-based logging and reporting enables organizations to instantly locate network attacks, their source and destination, allowing rapid action.

Storage Management

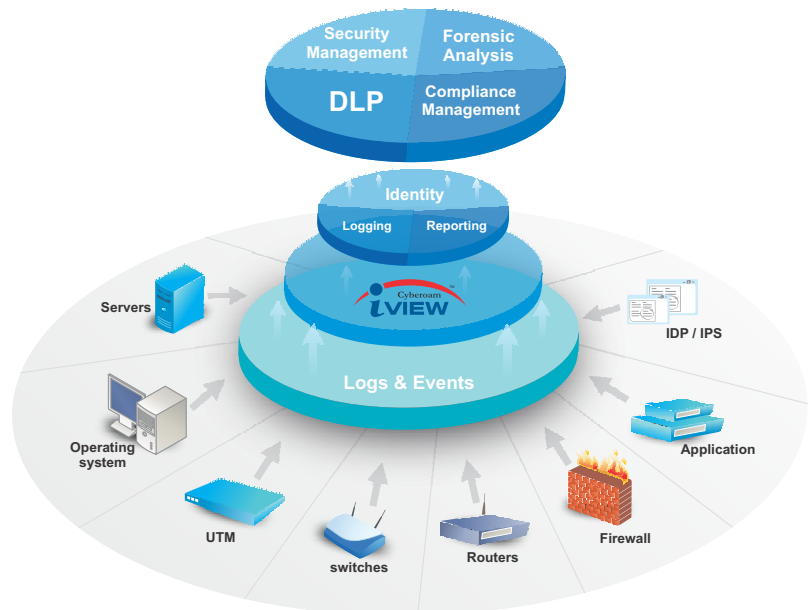
By utilizing the RAID technology, iView addresses the performance limitations of the conventional disk storage and delivers increased data protection against data loss due to the hard disk failure, high performance and increased storage capacity.

Compliance Management

Regulatory compliance demands overwhelming effort, time and cost to retrieve and store logs and reports from various devices. iView eliminates compliance complexities with one-step access to critical information with multiple summary reports on a single dashboard that can be drilled down up to the third-level for granular information. Organizations can easily monitor access and security violations in the network, accelerating incident response and facilitating compliance.

Forensic Analysis

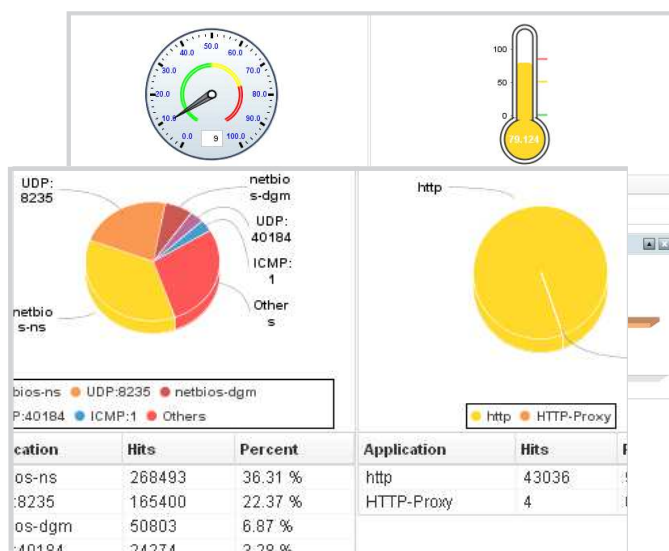
Security breaches result in huge legal costs and loss of reputation that can drive organizations to bankruptcy. iView helps organizations reconstruct the sequence of events that occurred at the time of security breach through iView logs and reports. It helps reducing the cost of investigation and analysis and minimize network downtime while gathering historical information.



Cyberoam iView Work Flow

iView enables rapid event investigation and easy access to all audit and events data by storing raw logs and related records on the same appliance in a secure database. The database design aids both efficient storage and fast retrieval of the collected data. And, with the on-appliance terabyte storage space, iView appliances enable long-term, fully-accessible data retention.

Sample Reports



Feature Specifications

Logs

- Real-time logs
- Archived logs
- Audit logs
- Log storage (Backup/restore)

Reports

- 1,200+ drilldown Reports
- Historical Reports
- Compliance Reports - HIPPA, SOX, FISMA, GLBA, PCI
- User and Group based Reports - Web, Email, IM, FTP, Application
- Internet Usage Reports - Data Transfer, Surfing Time
- Security Reports - Firewall, Attacks, Spam, Virus, Blocked Attempts
- Remote Access Reports - VPN, SSL VPN
- Search Engine Reports - Google, Yahoo, Bing, Wikipedia, Rediff, eBay
- Trend Reports
- Search Reports

- Multi-format reports - tabular, graphical
- Exportable formats - PDF, Excel
- Email Alerts/automated Report Scheduling

Administration

- Web based Management Console
- Role-based administration
- Multiple Dashboards - Resource, Device, User, Host, Email Address
- Automatic Device Detection
- Device Grouping
 - device type
 - device models
- Bookmark Management
- Customized Report Views
- Data Retention

Operating Environment

- Hardened Linux OS

Supported Web Browsers

- Microsoft Internet Explorer 6.0+
- Mozilla Firefox 2.0+ (Best view)
- Google Chrome

Supported Network and Security Devices

- Custom/Proprietary devices including UTM's
- Proxy Firewalls
- Access Gateway
- Smart Wireless Router
- Web Server
- Endpoint Security Solution
- Syslog-compatible devices

Hardware Specifications

CR-iVU25NR

CR-iVU100NR

CR-iVU200NR

Interfaces

Ethernet Ports (GbE)	4	6	6
Console Ports (RJ45)	1	1	1
USB Ports	1	1	1
CF Card (GB)	4	4	4
Number of Hard Drives	1 (1TB)	4 (2TB each)	4 (4TB each)
Total Available Storage	1TB	8TB	16TB
RAID Storage Management	-	RAID 5	RAID 5
RAM (GB)	2	4	8

Performance

Events per Second (EPS)	350	750	1,250
Devices recommended	30	125	250

Dimensions

H x W x D (inches)	1.72 x 10.83 x 17.32	3.46 x 16.7 x 20.9	3.46 x 16.7 x 20.9
H x W x D (cms)	4.4 x 27.5 x 44	8.8 x 42.4 x 53.1	8.8 x 42.4 x 53.1
Weight	3.78kg, 8.35lbs	16 kg, 36lbs	16 kg, 36lbs

Power

Input Voltage	100-240 VAC	100-240 VAC	100-240 VAC
Consumption	65W	265W	265W
Total Heat Dissipation (BTU)	175	425	425

Environmental

Operating Temperature	5 to 40 °C	5 to 40 °C	5 to 40 °C
Storage Temperature	20 to 70 °C	20 to 70 °C	20 to 70 °C
Relative Humidity (Non condensing)	20 to 70%	20 to 70%	20 to 70%

Toll Free Numbers

USA : +1-800-686-2360 | India : 1-800-301-00013

APAC/MEA : +1-877-777-0368 | Europe : +44-808-120-3958

